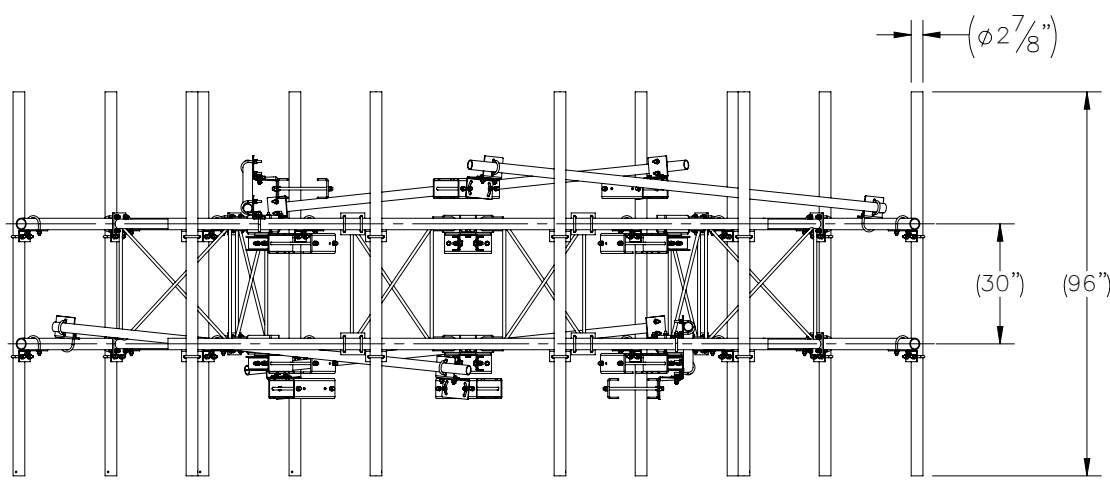
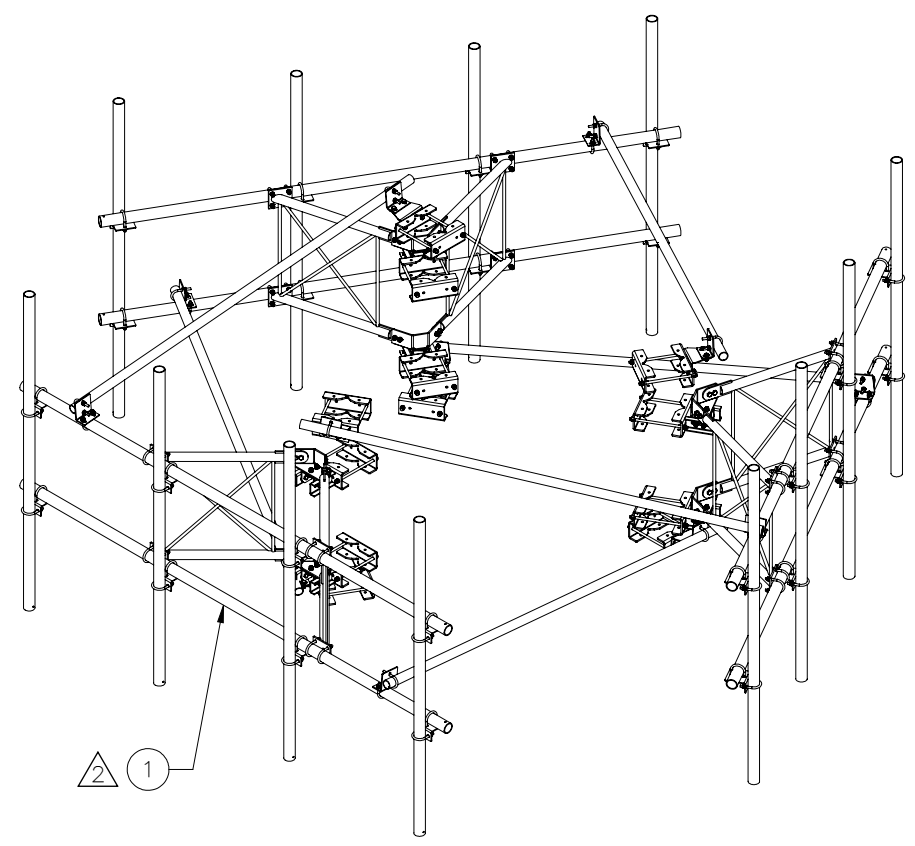
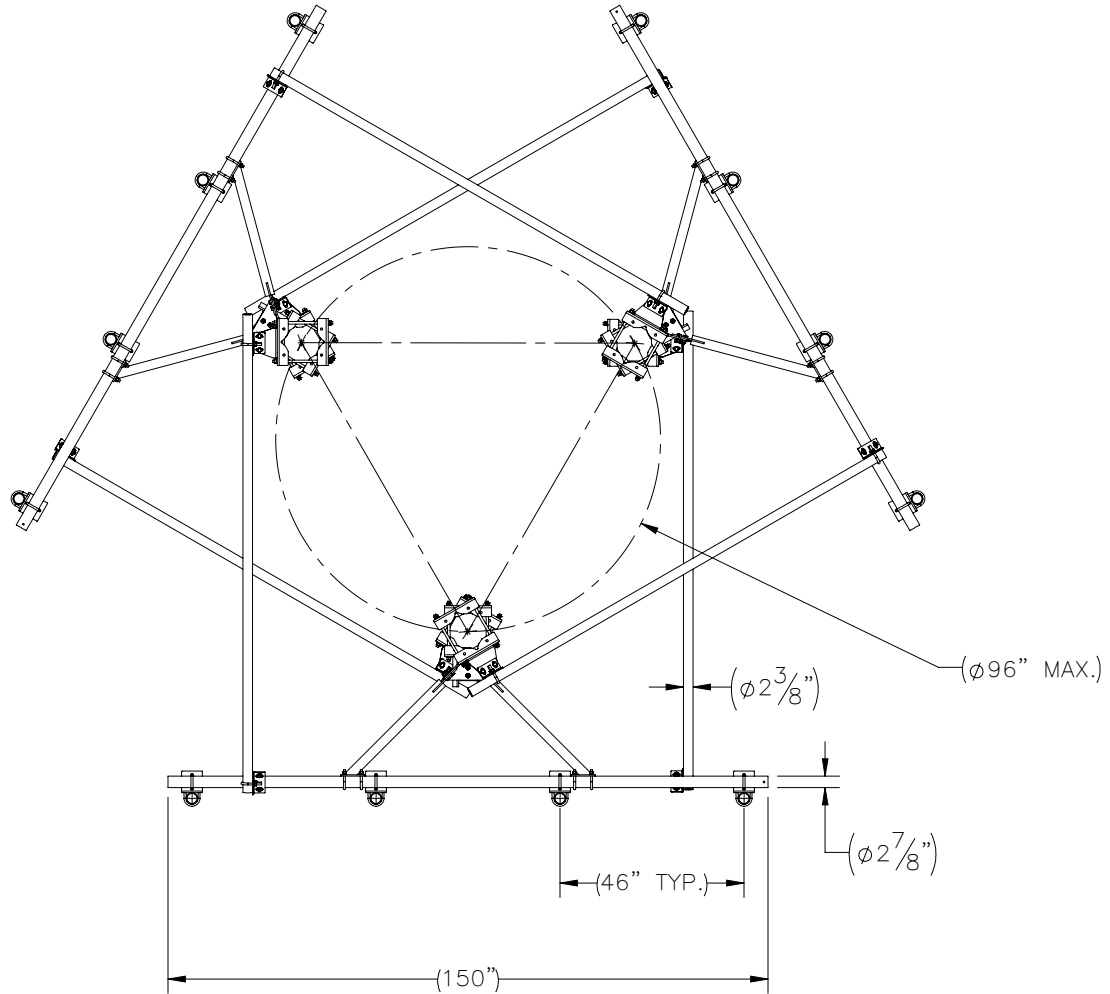

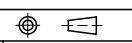


THE INFORMATION CONTAINED IN THIS DRAWING IS THE SOLE PROPERTY OF ELECTRO MECHANICAL INDUSTRIES, INC. ANY REPRODUCTION IN PART OR WHOLE WITHOUT THE WRITTEN PERMISSION OF ELECTRO MECHANICAL IND., IS PROHIBITED.

REVISIONS					
REV.	DCN #	DESCRIPTION	DATE	BY	APPROVED
2	01226	CONVERTED TO SHELL PART NUMBER FOR 1012-0030-3471.	02/21/2023	JTR	JPB



ITEM NO.	PART NUMBER	DESCRIPTION	LENGTH	WEIGHT
1	1012-0030-3471	SECTOR FRAME, 12'-6" X 8' TRI-FACE, 4 VERT. ANTENNA SUPPORTS		2141.33

SURFACE FINISH <input checked="" type="checkbox"/> UNLESS OTHERWISE SPECIFIED		UNLESS OTHERWISE SPECIFIED DIMENSIONS ARE IN INCHES		APPROVALS		DATE		 ELECTRO MECHANICAL INDUSTRIES, INC. 11230 NEESESHAW DRIVE HOUSTON, TEXAS 77065 1-800-453-0050	
MATERIAL SEE PARTS LIST		TOLERANCES		DRAWN		8/12/2022			
THIRD ANGLE PROJECTION 		.0 ± .06 .00 ± .015 .000 ± .005		CHECKER		8/15/2022		TITLE: SECTOR FRAME, 12'-6" X 8' TRI-FACE, 4 VERT. ANTENNA SUPPORTS	
NEXT ASSY USED ON		FRACTIONS ± 1/16 ANGLES ± .25°		ENGINEER		8/18/2022			
APPLICATIONS		HOLES: DRILLED OR PUNCHED ± 1/32 BURNED ± 1/32		PRODUCTION		8/18/2022		SIZE B DRAWING NO. 1000-0010-0343 REV 2 SCALE: 1:48 WEIGHT: 2141.33 lbs. SHEET 1 OF 1	