



AT&T WIC & WUC Recommended Helical Accessories Guide



1-800-453-0050

www.emiproducts.com

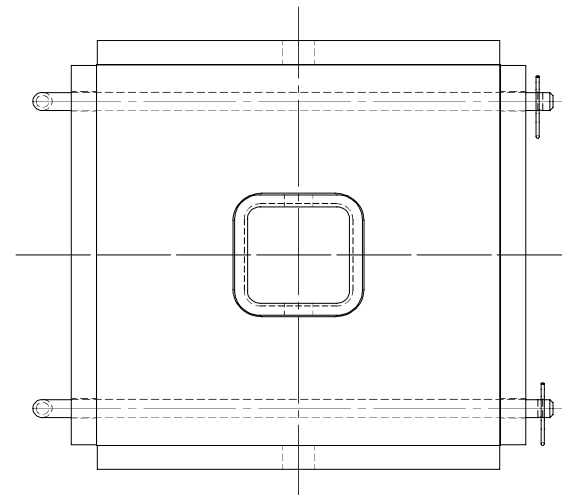
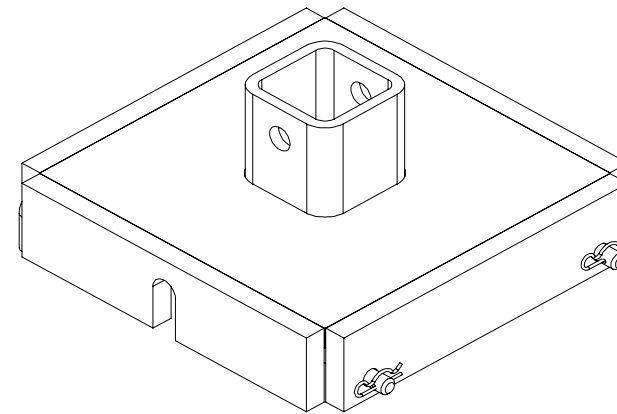
11230 Neeshaw Drive, Houston, Texas 77065

EMI Helical Drive Tool

Our drive tool saves time in the field by eliminating the need to directly bolt to the helical. Instead, it features tool-free pins for less time on the job site. The large square drive head is less prone to stripping than hex heads. Our drive tool eliminates the need for a Kelly bar adapter and plate entirely.

Part Number	Size
10" Helical 100mm Sq. EMI- 1000-0020-0013 ↓	
10" Helical 3" Hex EMI- 1000-0020-0064 ↓	
10" Helical 2.5" Hex EMI- 1000-0020-0042 ↓	
10" Helical 2" Hex EMI- 1000-0020-0041 ↓	
8"/6" Helical 100mm Sq. EMI- 1000-0020-0015 ↓	
8"/6" Helical 3" Hex EMI- 1000-0020-0085 ↓	
8"/6" Helical 2.5" Hex EMI- 1000-0020-0040 ↓	
8"/6" Helical 2" Hex EMI- 1000-0020-0016 ↓	

↓ Click the **EMI** part number to download drawing.



Drive Head Requirements for Helical Installation

Minimum 20,000 ft. lbs. of torque, 30,000 ft. lbs. recommended.
Higher torque ratings will allow you to maintain higher drive speeds through various soil conditions.
Recommended Kelly bar size between 2" and 3".

Recommendations

EMI recommends the Digga Planetary Anchor Drive models 25ADS, 30ADS, 20ALS and 25ALS with 100mm square drive head. These models mate perfectly to our 100mm square head helical drive tool.

While most skid steer loaders or mini excavators are capable of driving a hydraulic drive head, EMI recommends the Takeuchi TB235 excavator for its available power and cost effective nature.



Drive Head Manufacturers:

Digga USA
(563) 875-7915
www.diggausa.com

Pro-Dig
(866) 259-1801
www.pro-dig-usa.com

Pier Tech
(636) 536-5007
www.piertech.com

Excavator and Skid Steer Manufacturers:

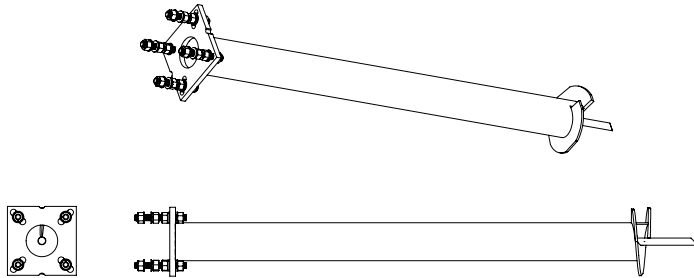
Takeuchi
www.takeuchi-us.com

Bobcat
www.bobcat.com

Caterpillar
<https://www.caterpillar.com>

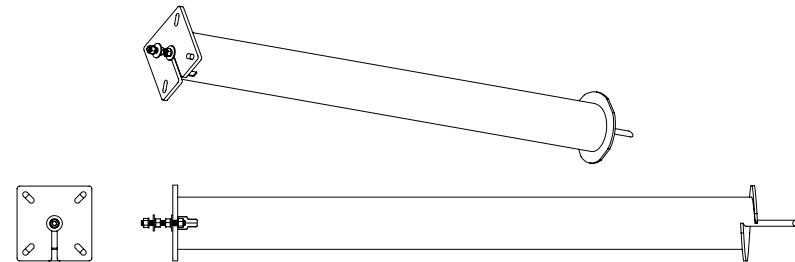
Quad Mount Helical Kit

- Includes one helical and four leveling hardware sets
- Can be used on all WIC and generator platforms
- Can be used in both Four Bolt and Single Bolt applications



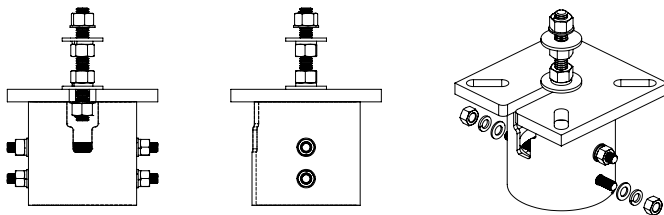
Single Stud Helical Kit

- Includes one helical and one leveling hardware set
- Helical can be used on all WIC and generator platforms, but only comes with one hardware set for WIC applications



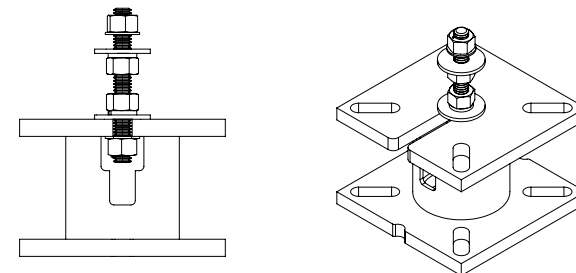
Helical Cap Kit

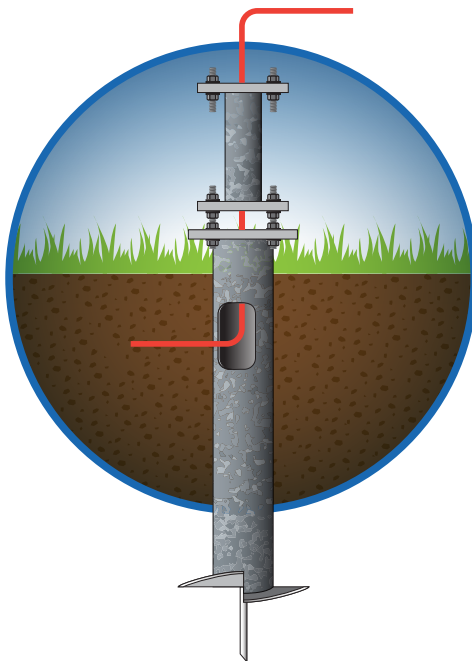
- Kit used when helical will not go all the way in the ground.
- Includes one cap with securing hardware and one leveling hardware set
- Cut helical at desired height, slip cap over helical end, drill holes and secure with supplied hardware
- Spray galvanize all cuts to prevent rusting



Foundation Extension Kit

- Used with slopes, concrete pads, etc.
- Kit includes one extension and leveling hardware set
- For use in single stud mount applications
- Available in quad mount applications





Foundation Design

The helical foundation is the preferred foundation option. Since it requires no concrete, it provides a faster and more economical method than forming, pouring, curing and inspecting a concrete foundation system. From site build records, AT&T Engineering concluded the helical foundation system can be used at 92% of all cell sites.

EMI's engineers design the specific helical to match the platform, elevation, equipment and environmental loadings. *For these calculations, our engineers relied on the IBC Table 1806.2. Providing presumptive soil values of a minimum of 2,000 psf. vertical foundation pressure for sand with 150 psf./ft. lateral bearing pressure. For clay/silt soils, please contact EMI to confirm the specifics of your configuration.*

If the cell site is known for poor soils, you may contact EMI Engineering at 281-894-1600 and ask us to assist you in foundation selection.